

ELLENBORO RAIL TRAIL

GREENWAY FEASIBILITY STUDY TO CONNECT
THERMAL BELT RAIL TRAIL TO THE TOWN OF ELLENBORO

Property Owners Meeting

March 11, 2025



McADAMS



NIA RODGERS RLA, LEED® AP, EI
Sr. project manager / planning lead



TERESA BUCKWALTER PLA
Sr. Landscape Architect



**Jeromy
Wegrzyn**
Designer III



**Kenny
Armstrong**
Senior
Planner



**Brian
Bernard**
Designer III



Magnolia Long
Senior Planner / RPO Director



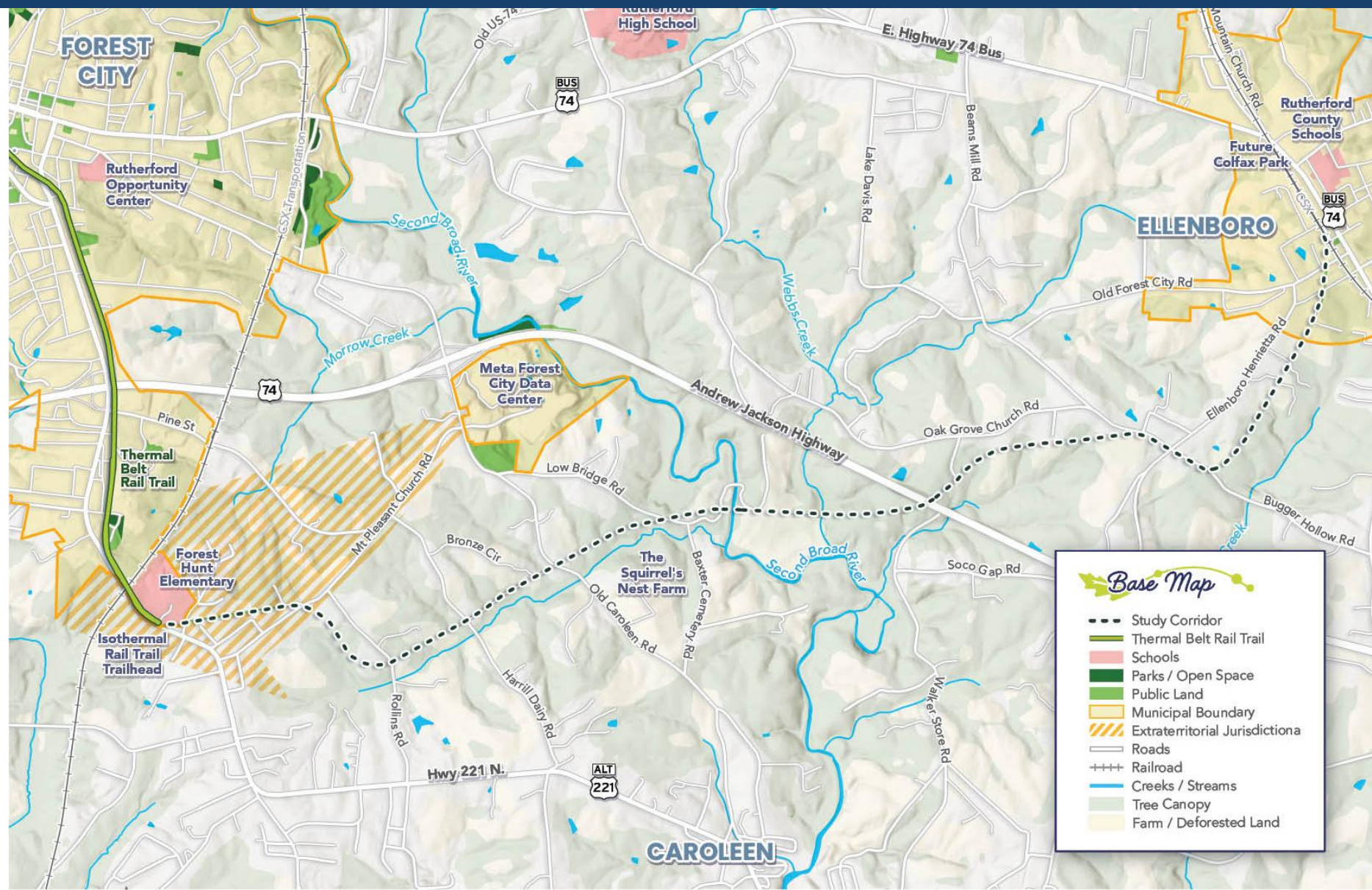
FORMAT

- Short presentation
- Find your property on the maps
- Come share your thoughts with us!
- Foothills Conservancy: landowner options and benefits of voluntary land conservation

Your participation is voluntary!
Property Owner Participation is Key!



Exploring
extending the
Thermal Belt Rail
Trail from Forest
City to Ellenboro.



WE NEED TO KNOW

To create the connection, we need to know:

- If it can be done;
- How it can be done;
- What impact it may have; and
- What it will take to be successful.



Thermal Belt Rail Trail near Forest Hunt Elementary School Credit: McAdams

WHAT WILL IT TAKE TO BE SUCCESSFUL?

We asked this of the Steering Committee made up of Local officials and citizens.

- Thermal Belt Rail Trail continuation
- Feasible route
- **Has community + landowner support**
- Transportation options expanded
- Safer places for people who walk
- Support Colfax Cotton Gin Park



Credit: Larry Penkava

TRAIL TYPE

- Off Road Greenway
- Side Path along Right-of-Way



Side Path Credit: McAdams

BENEFITS

- Connecting communities (transportation and economic benefit)
- Health benefits (physical and mental health)
- Spur trail-related businesses
- Shared history



Credit: The Spirited Explorer

PRIVATE PROPERTY

- We take measures, such as fences, trees and signs to keep people on the trail and off of private property.



Credit: Teresa Buckwalter

WHAT ARE WE ANALYZING?

- Road Crossings
- Bridges
- Environmental Features
- Historical and cultural points of interest
- Utilities
- Estimated Costs
- Funding Opportunities

Rail Bridge over HWY 74, Credit: McAdams



Existing Corridor, Credit: McAdams

Feasibility Study Process



NEXT STEPS

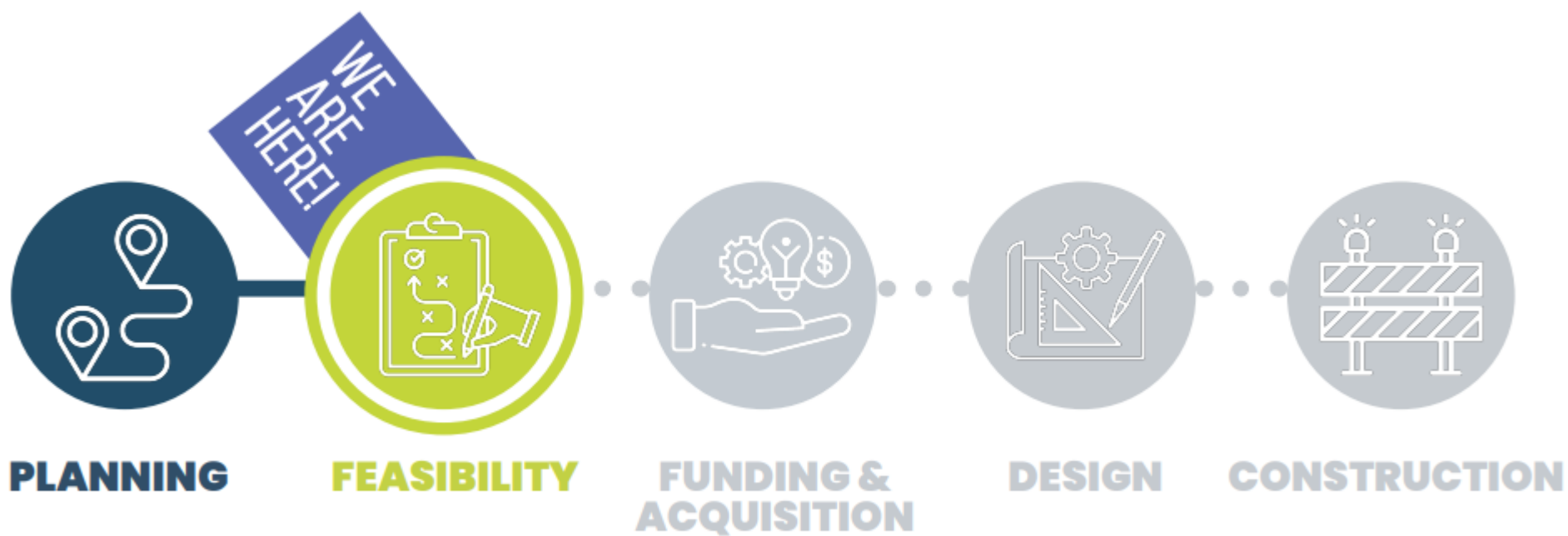
- Look for a community-wide online survey that we will send in the coming weeks!
- Continue to add your voice.
- Check out website:



<https://frcnc.gov/regional-development/isothermal-rural-planning-organization-rpo/fonta-flora-feasibility-study/ellenboro-rail-trail-feasibility/>



Main Street, Ellenboro, NC Credit: McAdams



WE DON'T HAVE ALL THE ANSWERS YET

- Who will provide maintenance?
- How will public safety be handled?
- What will the trail material be?
- What will the costs be?

- Your input will help this effort!



Second Broad River, Rutherford County, NC Credit: McAdams

COME TALK TO US:

1. FIND YOUR PROPERTY ON MAPS
2. TALK TO FACILITATOR
3. SHARE HISTORY, IDEAS,
THOUGHTS



Credit: Rutherford Tourism Development Authority



Rendering of Colfax Park in Ellenboro; Credit: Rutherford Bound