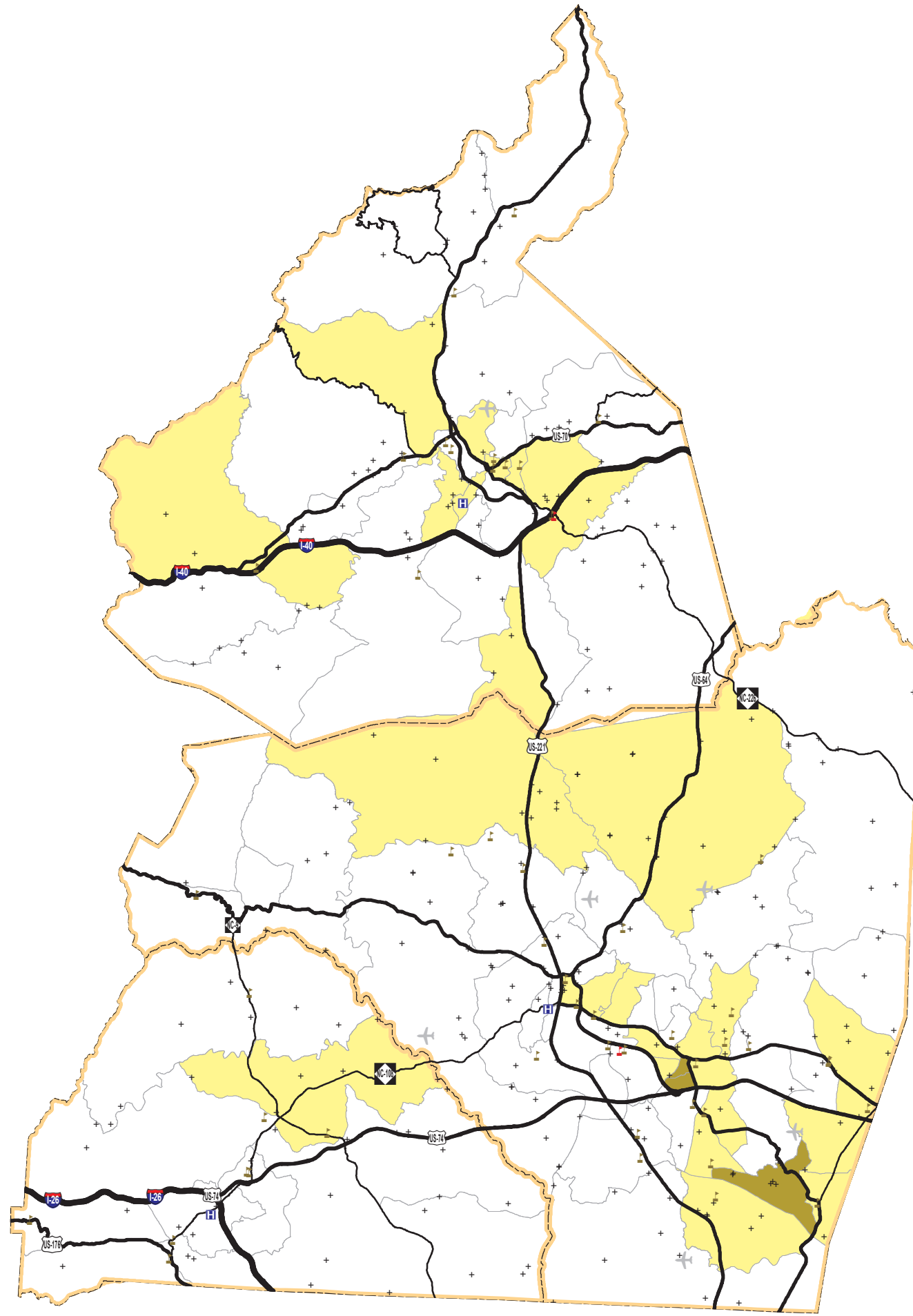


Title VI 2011-2015 ACS Block Group Level - Poverty



- College and University
- Schools
- Hospitals
- Churches & Cemetery
- Airports

- Interstate
- US Highways
- NC Highways
- Other Roads

County Boundaries

Poverty

- <20%
- 20% - 50%
- 50.1% - 80%
- >80.1%

