

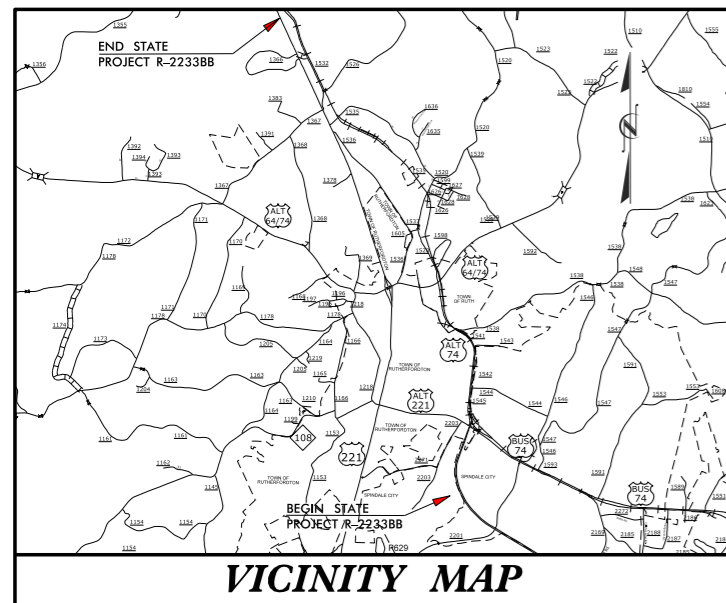
STATE OF NORTH CAROLINA
 DIVISION OF HIGHWAYS



RUTHERFORD COUNTY

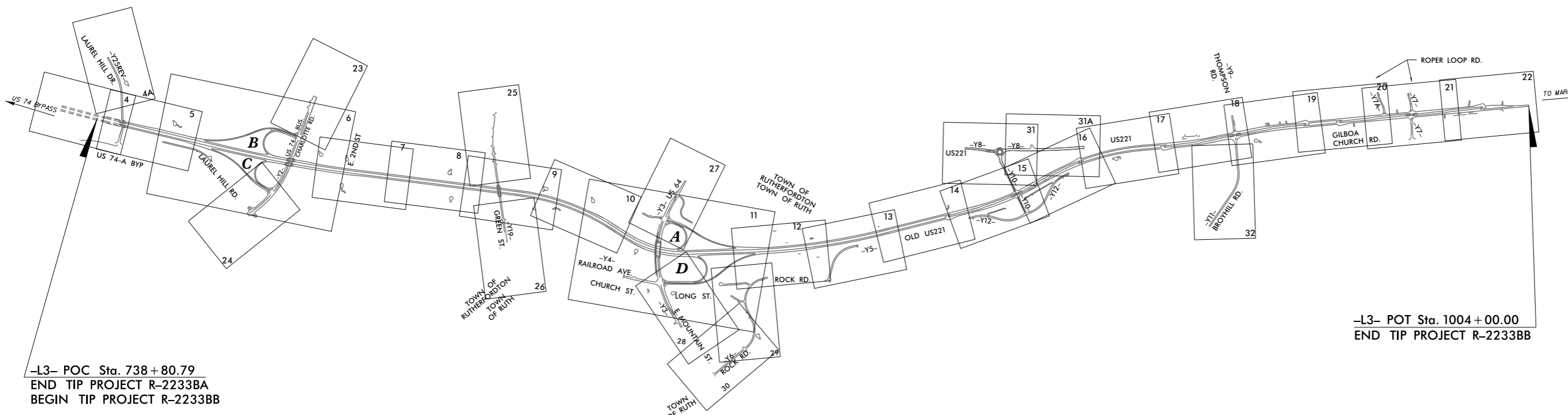
**LOCATION: US 221 SOUTH OF US 74 BUSINESS (CHARLOTTE ROAD)
 TO NORTH OF SR 1366 (ROPER LOOP ROAD)**

**TYPE OF WORK: GRADING, DRAINAGE, PAVING
 AND STRUCTURES**



FINAL RW PLANS

VICINITY MAP



-L3- POC Sta. 738+80.79
 END TIP PROJECT R-2233BA
 BEGIN TIP PROJECT R-2233BB

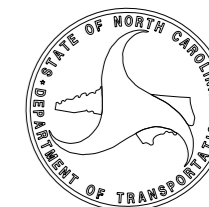
-L3- POT Sta. 1004+00.00
 END TIP PROJECT R-2233BB

TITLE SHEET

RIGHT OF WAY
 PLANS
 WITH
 AERIAL MAPPING

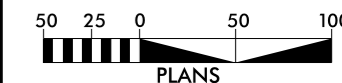
RIGHT OF WAY DATE:
 JULY 28, 2017

LETTING DATE:
 JANUARY 21, 2020



NCDOT CONTACT:
 DERRICK WEAVER, P.E.

PRELIMINARY PLANS
 DO NOT USE FOR CONSTRUCTION
 INCOMPLETE PLANS
 DO NOT USE FOR R/W ACQUISITION
 DOCUMENT NOT CONSIDERED FINAL
 UNLESS ALL SIGNATURES COMPLETED



PLANS PREPARED FOR
 NCDOT BY:



OCTOBER 2018

| | |
|-------------------------|---------------------|
| RW SHEET NO. | |
| ROADWAY DESIGN ENGINEER | HYDRAULICS ENGINEER |

**DOCUMENT NOT CONSIDERED FINAL
UNLESS ALL SIGNATURES COMPLETED**

5/14/19



**BEGIN TIP PROJECT R-2233BB
END FUTURE PROJECT R-2233BA**

**MATCH TO SHEET 4A -
Y25REV - STA. 26 + 50.00**

**PROPOSED
LANDFILL CONNECTOR**

FUTURE BYPASS

**PROPOSED DUAL
STRUCTURES**

TO US 74

MATCH TO SHEET 5 - L3 - STA. 745 + 50.00

US74

EXTEND LEFT TURN LANE



5/14/99



2425 WYCLIFF ROAD
SUITE 410
RALEIGH, NC 27607
PHONE: 773.83.9219
NC CCA No. F-2929

| | |
|--|---------------------|
| PROJECT REFERENCE NO. | SHEET NO. |
| R-2233BB | 4A |
| RW SHEET NO. | |
| ROADWAY DESIGN ENGINEER | HYDRAULICS ENGINEER |
| DOCUMENT NOT CONSIDERED FINAL UNLESS ALL SIGNATURES COMPLETED | |



PROPOSED CUL-DE-SAC

PROPOSED LANDFILL CONNECTOR

NAD 83

MATCH TO SHEET 4 -- -Y25REV- STA. 26+50.00

275 RUTHERFORD COUNTY DB 642 PG 273

276 KATHLEEN CARPENTER HORACE CARPENTER DB 549 PG 501

277 WILLIE L. HOVIS DB 369 PG 446

STANLEY MCENTIRE DB 476 PG 30 DB 535 PG 303

MARY A. LOGAN DB 673 PG 99
KATHY LOGAN DB 687 PG 1

BOBBY J. VAUGHN BRENDA VAUGHN DB 1044 PG 803

C AND H LAND COMPANY DB 860 PG 116

J. W. LOGAN & FRANCES LOGAN DB 374, PG 743

275 RUTHERFORD COUNTY DB 642 PG 273

278 STANLEY MCENTIRE DB 708 PG 28 DB 424 PG 635 DB 973 PG 172

1 GEORGE E. HOLLAND & LOUISE A. HOLLAND DB 860, PG 116, PORTION OF TRACT FIVE

2 HORTON-AMERICAN PROPERTIES, LLC DB 745, PG 622

RUTHERFORD COUNTY FIREFIGHTERS ASSOCIATION, INC. DB 484 PG 293

30 31 32 33 34 35 36 37 38 39 40 41 42 43 44 45 46 47 48 49 50 51 52 53 54 55 56 57 58 59 60 61 62 63 64 65 66 67 68 69 70 71 72 73 74 75 76 77 78 79 80

5/14/2023



2610 WYCHIFF ROAD
SUITE 410
RALPH, NC 27607
PHONE: 703.881.9329
NC CCA No. F-2929

| | |
|-----------------------|-----------|
| PROJECT REFERENCE NO. | SHEET NO. |
| R-2233BB | 5 |

| | |
|-------------------------|---------------------|
| RW SHEET NO. | |
| ROADWAY DESIGN ENGINEER | HYDRAULICS ENGINEER |
| | |

DOCUMENT NOT CONSIDERED FINAL UNLESS ALL SIGNATURES COMPLETED

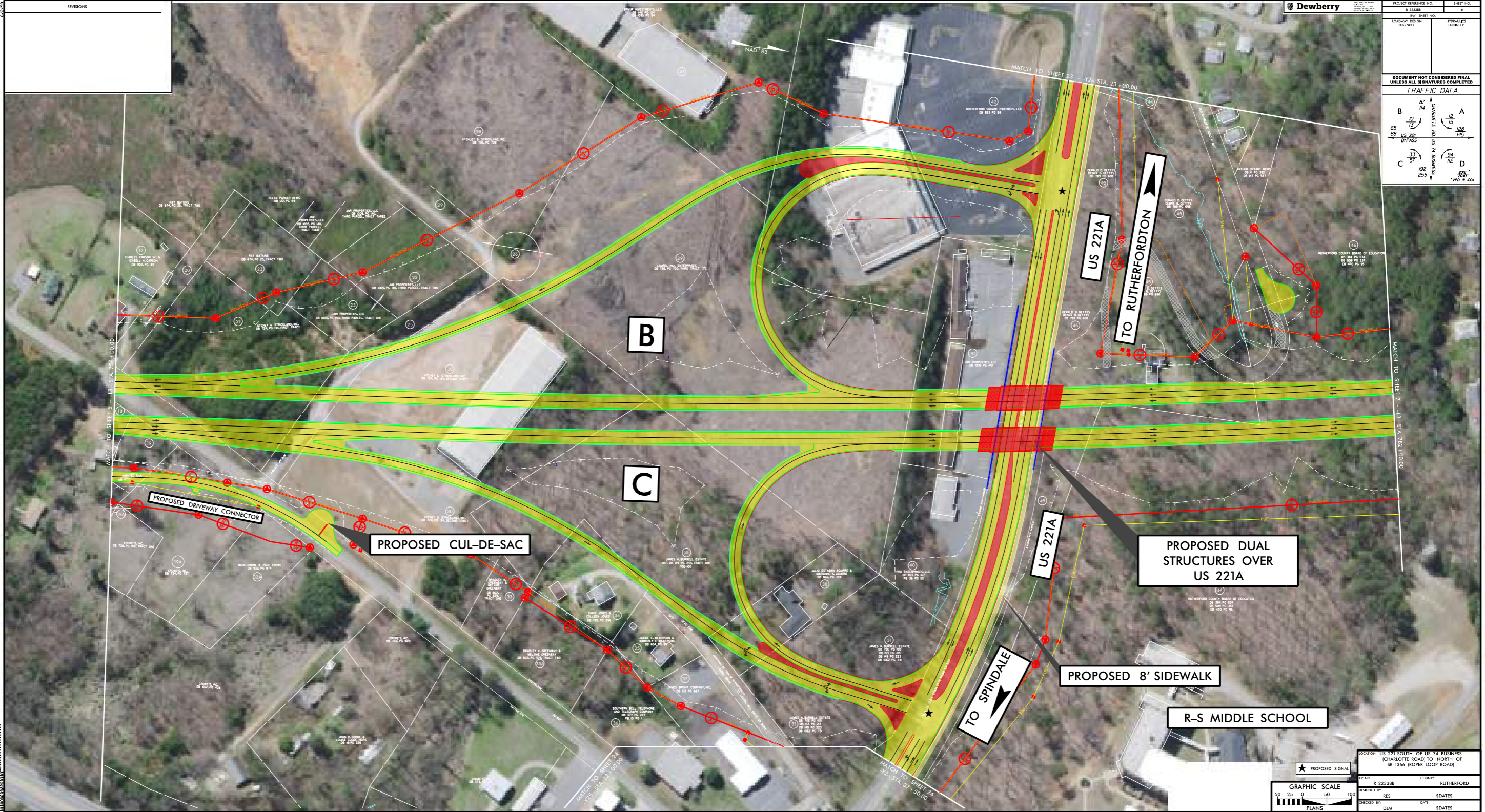


DEWBERRY PROJECT: R-2233BB
 SHEET NO. 5
 DATE: 5/14/2023
 PROJECT LOCATION: 2610 WYCHIFF ROAD, SUITE 410, RALPH, NC 27607
 PROJECT DESCRIPTION: RUTHERFORDTON BYPASS (US 221)
 DESIGNER: DREW BERRY, P.E.
 CHECKER: [Blank]
 APPROVER: [Blank]
 SCALE: AS SHOWN
 NOTES: SEE SHEET 4 AND SHEET 6 FOR ADJACENT AREAS.

| NO. | DATE | REVISIONS |
|-----|------|-----------|
| | | |

| | |
|-------------------------------|-----------------------|
| Dewberry | |
| PROJECT REFERENCE NO. 2223388 | SHEET NO. 2 |
| REV. SHEET NO. | PROFESSIONAL ENGINEER |
| ROADWAY DESIGN ENGINEER | |

| | |
|---|-----------------|
| DOCUMENT NOT CONSIDERED FINAL UNLESS ALL SIGNATURES COMPLETED | |
| TRAFFIC DATA | |
| B 65 88 BYPASS | A 128 145 |
| C 33 57 | D 54 112 |
| CHARLOTTE RD. BUS. 74 BUSINESS | |
| 200' *1/2" = 100' | |



| | |
|--|---|
| ★ PROPOSED SIGNAL | LOCATION: US 221 SOUTH OF US 74 BUSINESS (CHARLOTTE ROAD TO NORTH OF SR 1566 (ROPER LOOP ROAD)) |
| GRAPHIC SCALE 50 75 0 50 100 PLANS | TP NO. B-223388 COUNTY: RUTHERFORD |
| | DESIGNED BY: RES DATE: SDATES |
| | CHECKED BY: DJM DATE: SDATES |

5/14/19



2610 WYCLIFF ROAD
SUITE 410
RALEIGH, NC 27607
PHONE: 773.83.9329
NC CCA No. F-2929

| | | | |
|--|--|---------------------|--|
| PROJECT REFERENCE NO. | | SHEET NO. | |
| R-2233BB | | 7 | |
| RW SHEET NO. | | | |
| ROADWAY DESIGN ENGINEER | | HYDRAULICS ENGINEER | |
| DOCUMENT NOT CONSIDERED FINAL UNLESS ALL SIGNATURES COMPLETED | | | |



MATCH TO SHEET 6 - L3- STA. 782+00.00

MATCH TO SHEET 8 - L3- STA. 794+50.00

5/14/19

5/14/19
 69
68
67
66
65
64
63
62
61
60
59
58
57
56
55
54
53
52
51
50
49
48
47
46
45
44
43
42
41
40
39
38
37
36
35
34
33
32
31
30
29
28
27
26
25
24
23
22
21
20
19
18
17
16
15
14
13
12
11
10
9
8
7
6
5
4
3
2
1

| | | |
|--|---------------------|----------------|
| PROJECT REFERENCE NO. R-2233BB | | SHEET NO. 8 |
| RW SHEET NO. | | |
| ROADWAY DESIGN ENGINEER | HYDRAULICS ENGINEER | |
| DOCUMENT NOT CONSIDERED FINAL UNLESS ALL SIGNATURES COMPLETED | | |



MATCH TO SHEET 7 -- L3-- STA. 794+50.00

MATCH TO SHEET 9 -- L3-- STA. 808+00.00

PROPOSED CUL-DE-SAC

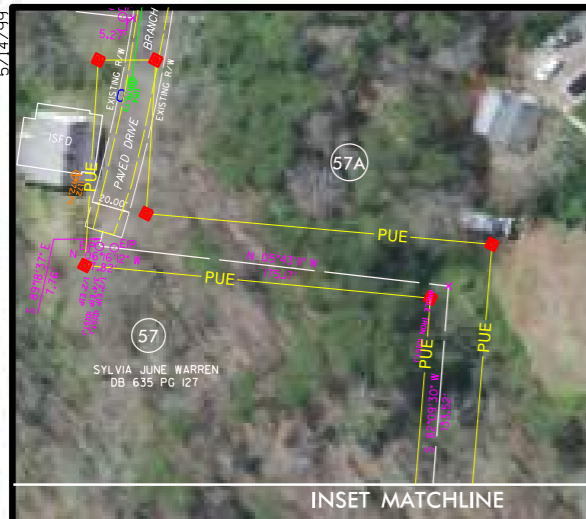
PROPOSED CUL-DE-SAC

RUTHERFORDTON BYPASS (US 221)

INSET MATCHLINE

INSET MATCHLINE

NAD 83





5/14/19

MATCH TO SHEET 25 -- Y19-- STA. 17+00.00

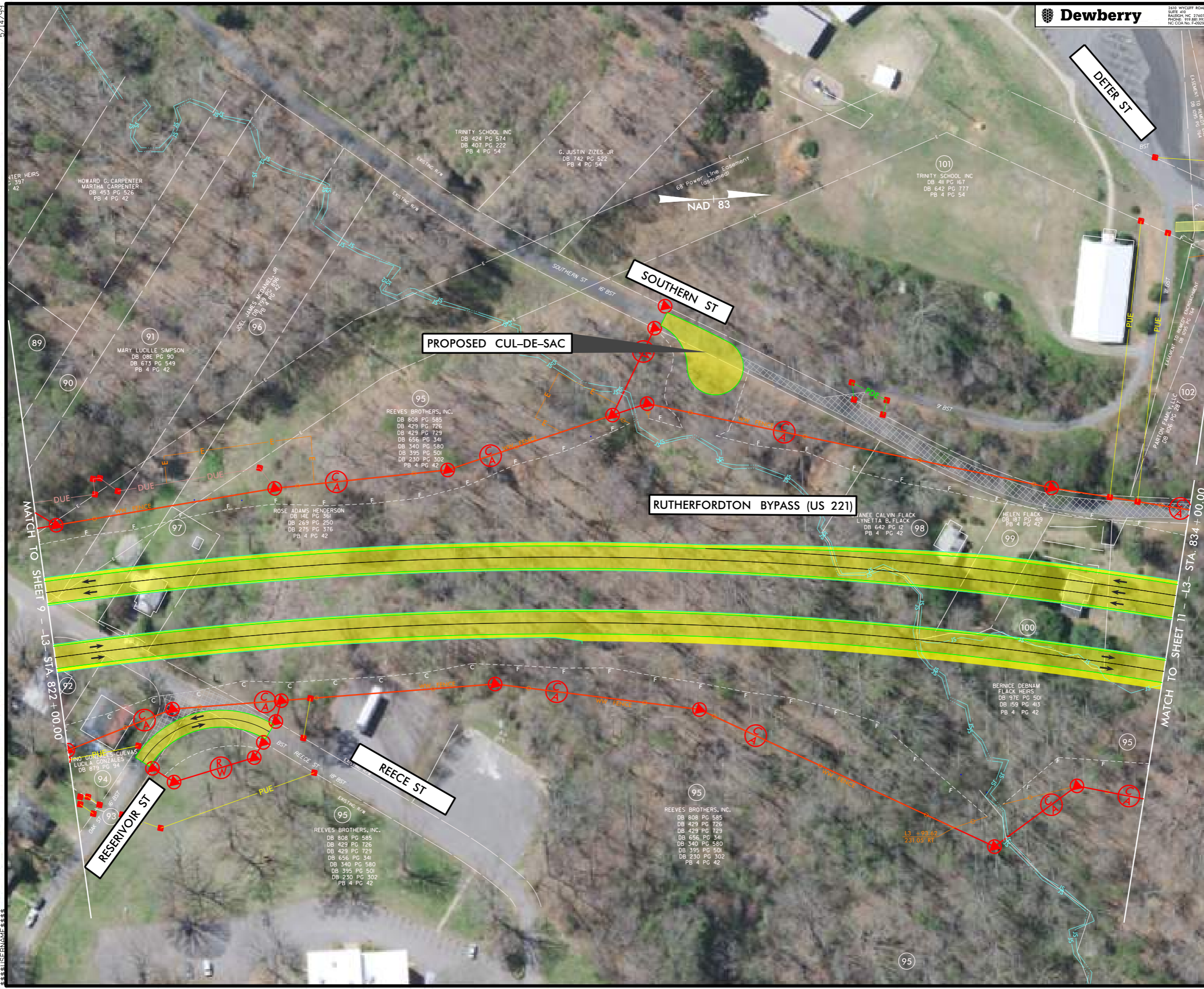
MATCH TO SHEET 8 -- L3-- STA. 808+00.00

MATCH TO SHEET 26 -- Y19-- STA. 25+50.00

MATCH TO SHEET 10 -- L3-- STA. 822+00.00

| | | | |
|--|--|---------------------|--|
| PROJECT REFERENCE NO. | | SHEET NO. | |
| R-2233BB | | 10 | |
| RW SHEET NO. | | | |
| ROADWAY DESIGN ENGINEER | | HYDRAULICS ENGINEER | |
| DOCUMENT NOT CONSIDERED FINAL UNLESS ALL SIGNATURES COMPLETED | | | |

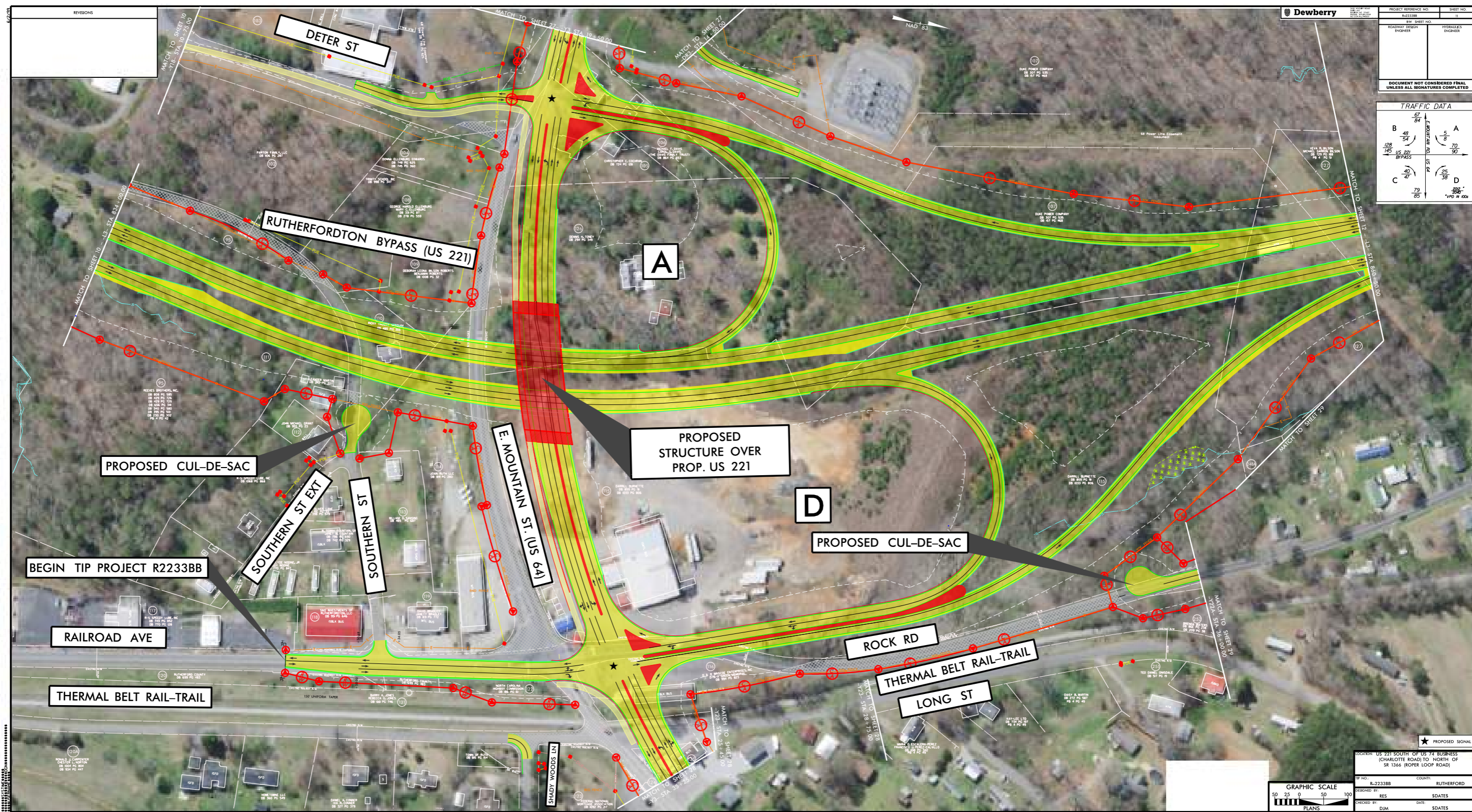
5/14/19



MATCH TO SHEET 11 - Y18 - STA. 10 + 75.00

MATCH TO SHEET 11 - L3 - STA. 834 + 00.00

MATCH TO SHEET 11 - L3 - STA. 834 + 00.00



| NO. | REVISIONS |
|-----|-----------|
| | |
| | |

Dewberry

| | |
|-------------------------|--------------------|
| PROJECT REFERENCE NO. | SHEET NO. |
| R22338B | 17 |
| ROADWAY DESIGN ENGINEER | RESIDUALS ENGINEER |
| | |

DOCUMENT NOT CONSIDERED FINAL UNLESS ALL SIGNATURES COMPLETED

| TRAFFIC DATA | |
|--------------|----|
| B | A |
| 48 | 5 |
| 54 | 8 |
| 125 | 70 |
| 145 | 90 |
| C | D |
| 47 | 25 |
| 79 | 38 |
| 85 | 80 |
| VPO # 008 | |

BEGIN TIP PROJECT R22338B
 RAILROAD AVE
 THERMAL BELT RAIL-TRAIL
 SHADY WOODS LN
 ROCK RD
 THERMAL BELT RAIL-TRAIL
 LONG ST
 GRAPHIC SCALE
 0 50 75 90 100
 PLANS

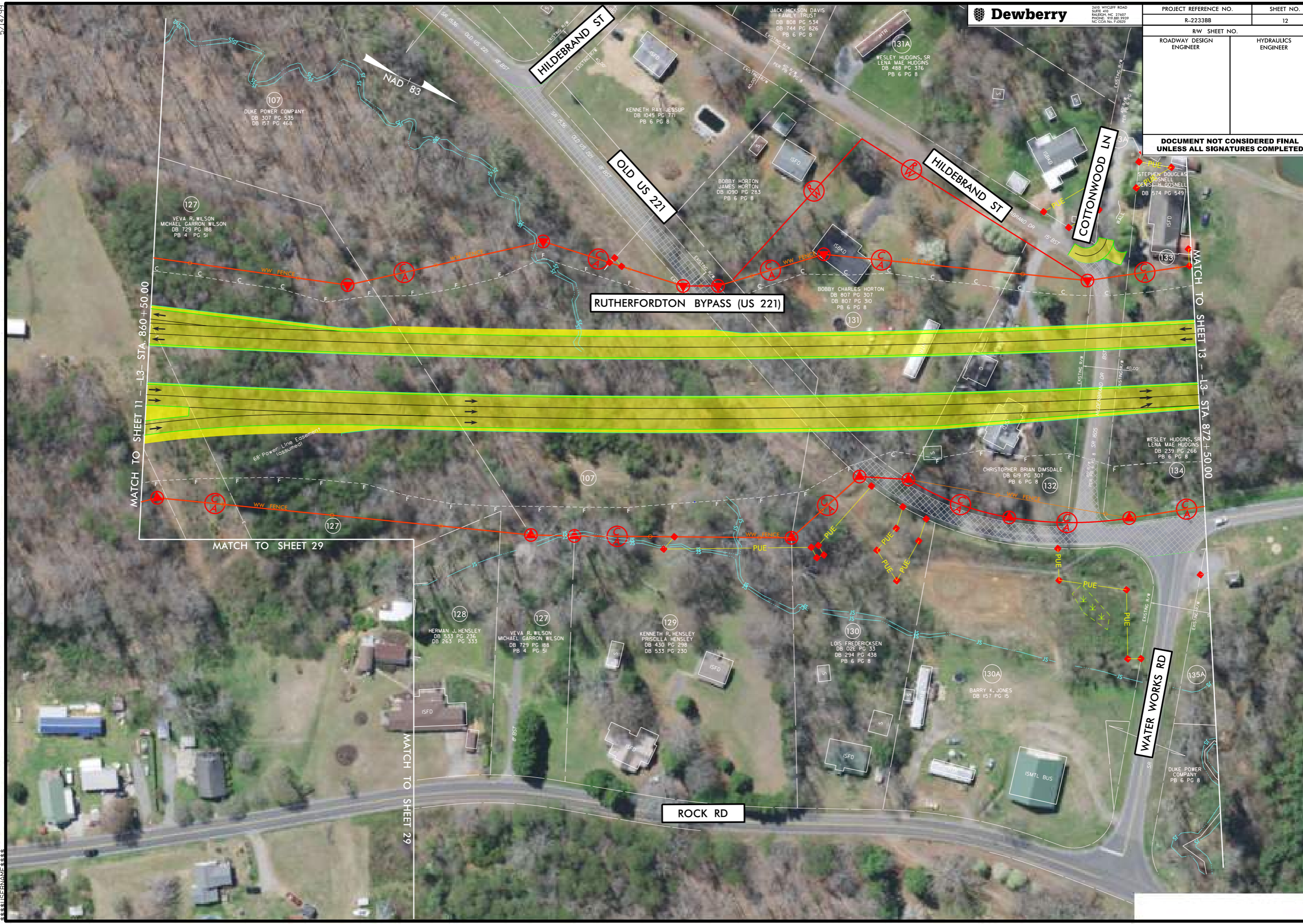
| | |
|---|--------------------|
| LOCATION: US 221 SOUTH OF US 74 BUSINESS (CHARLOTTE ROAD TO NORTH OF SR 1566 (ROPER LOOP ROAD)) | COUNTY: RUTHERFORD |
| IP NO.: R-22338B | DESIGNED BY: RES |
| CHECKED BY: DJM | DATE: SDATES |

5/14/2019



| | | | |
|-------------------------|--|---------------------|--|
| PROJECT REFERENCE NO. | | SHEET NO. | |
| R-2233BB | | 12 | |
| RW SHEET NO. | | | |
| ROADWAY DESIGN ENGINEER | | HYDRAULICS ENGINEER | |

DOCUMENT NOT CONSIDERED FINAL UNLESS ALL SIGNATURES COMPLETED



MATCH TO SHEET 11 - I-13 - STA. 860+50.00

MATCH TO SHEET 13 - I-13 - STA. 872+50.00

MATCH TO SHEET 29

MATCH TO SHEET 29

ROCK RD

WATER WORKS RD

RUTHERFORDTON BYPASS (US 221)

HILDEBRAND ST

OLD US 221

HILDEBRAND ST

COTTONWOOD LN



MATCH TO SHEET 12 -- L3-- STA. 872 + 50.00

MATCH TO SHEET 14 -- L3-- STA. 886 + 00.00

RUTHERFORDTON BYPASS (US 221)

OLD US 221

BEGIN TIP PROJECT R2233BB

END TIP PROJECT R2233BB

ROCK RD

CEDAR LN

SASSAFRAS RD

5/14/2019

5/14/19



2610 WYCLIFF ROAD
RALEIGH, NC 27607
PHONE: 919.883.9329
NC CCA No. F-2929

| | |
|-----------------------|-----------|
| PROJECT REFERENCE NO. | SHEET NO. |
| R-2233BB | 14 |

| | |
|-------------------------|---------------------|
| RW SHEET NO. | |
| ROADWAY DESIGN ENGINEER | HYDRAULICS ENGINEER |

**DOCUMENT NOT CONSIDERED FINAL
UNLESS ALL SIGNATURES COMPLETED**



MATCH TO SHEET 13 - L3 - STA. 886 + 00.00

MATCH TO SHEET 15 - L3 - STA. 899 + 00.00

5/14/19

5/14/19

5/14/19

5/14/19

5/14/19

5/14/19

5/14/19

5/14/19

5/14/19

5/14/19

5/14/19

5/14/19

5/14/19

5/14/19

5/14/19

5/14/19

5/14/19

5/14/19

5/14/19

5/14/19

5/14/19

5/14/19

5/14/19

5/14/19

5/14/19

5/14/19

5/14/19

5/14/19

5/14/19

5/14/19

5/14/19

5/14/19

5/14/19

5/14/19

5/14/19

5/14/19

5/14/19

5/14/19

5/14/19

5/14/19

5/14/19

5/14/19

5/14/19

5/14/19

5/14/19

5/14/19

5/14/19

5/14/19

5/14/19

5/14/19

5/14/19

5/14/19

5/14/19

5/14/19

5/14/19

5/14/19

5/14/19

5/14/19

5/14/19

5/14/19

5/14/19

5/14/19

5/14/19

5/14/19

5/14/19

5/14/19

5/14/19

5/14/19

5/14/19

5/14/19

5/14/19

5/14/19

5/14/19

5/14/19

5/14/19

5/14/19

5/14/19

5/14/19

5/14/19

5/14/19

5/14/19

5/14/19

5/14/19

5/14/19

5/14/19

5/14/19

5/14/19

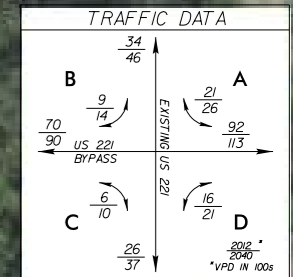
5/14/19

5/14/19

5/14/19

| | | | |
|-------------------------|--|---------------------|--|
| PROJECT REFERENCE NO. | | SHEET NO. | |
| R-2233BB | | 15 | |
| RW SHEET NO. | | | |
| ROADWAY DESIGN ENGINEER | | HYDRAULICS ENGINEER | |

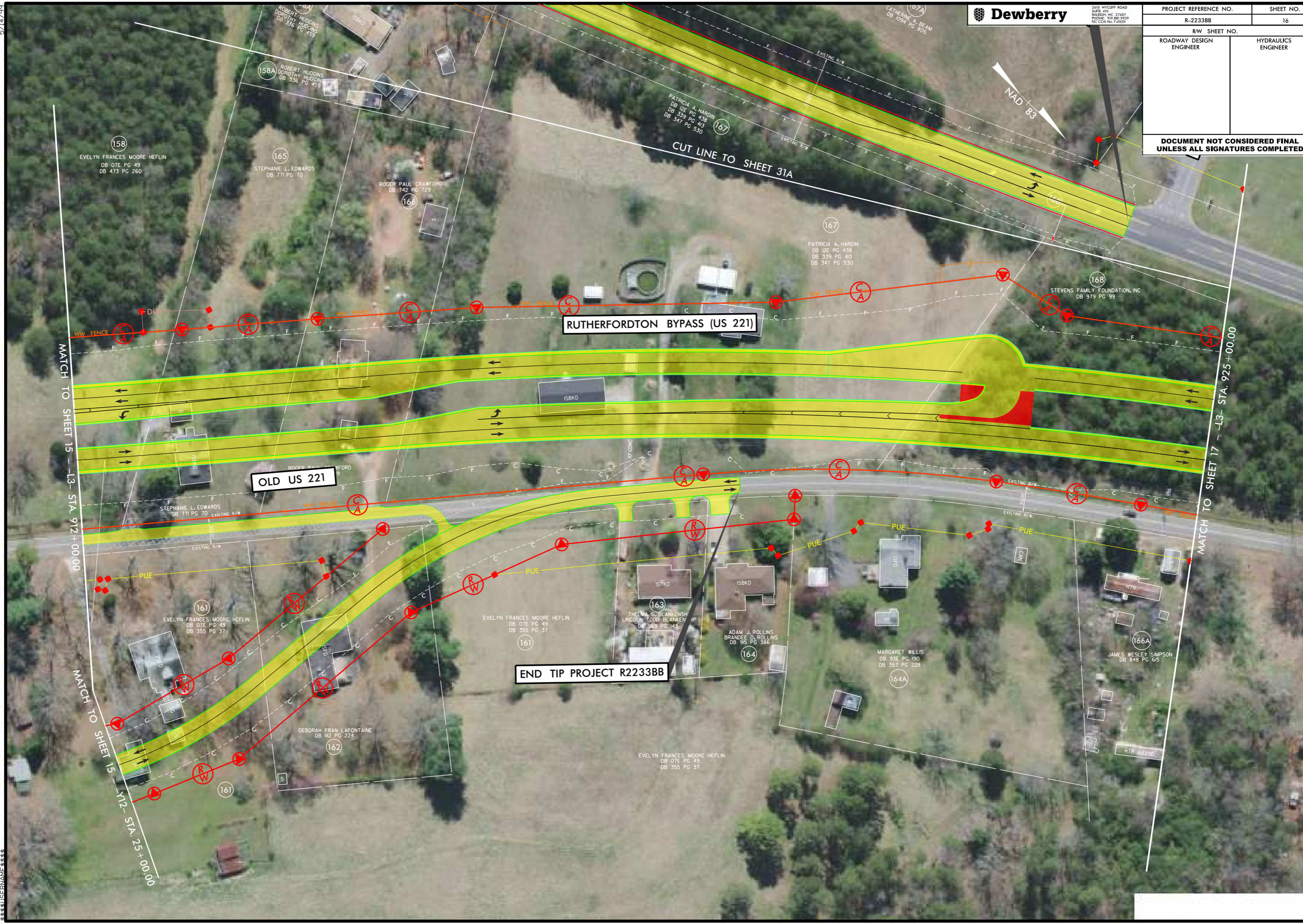
**DOCUMENT NOT CONSIDERED FINAL
UNLESS ALL SIGNATURES COMPLETED**



5/14/99

| | | | |
|--|--|---------------------|--|
| PROJECT REFERENCE NO. | | SHEET NO. | |
| R-2233BB | | 16 | |
| RW SHEET NO. | | | |
| ROADWAY DESIGN ENGINEER | | HYDRAULICS ENGINEER | |
| DOCUMENT NOT CONSIDERED FINAL UNLESS ALL SIGNATURES COMPLETED | | | |

5/14/19



MATCH TO SHEET 15 - L3- STA. 912+00.00

MATCH TO SHEET 15 - L3- STA. 925+00.00

MATCH TO SHEET 17 - L3- STA. 925+00.00

END TIP PROJECT R2233BB

OLD US 221

RUTHERFORDTON BYPASS (US 221)

158
EVELYN FRANCES MOORE HEFLIN
DB 07E PG 49
DB 473 PG 260

165
STEPHANIE L. EDWARDS
DB 771 PG 70

166
ROGER PAUL CRAWFORD
DB 742 PG 729

167
PATRICIA A. HARDIN
DB 12E PG 438
DB 339 PG 413
DB 347 PG 530

167
PATRICIA A. HARDIN
DB 12E PG 438
DB 339 PG 413
DB 347 PG 530

168
STEVENS FAMILY FOUNDATION, INC
DB 979 PG 99

161
EVELYN FRANCES MOORE HEFLIN
DB 07E PG 49
DB 355 PG 37

161
EVELYN FRANCES MOORE HEFLIN
DB 07E PG 49
DB 355 PG 37

163
THELMA G. BLANKENSHIP
LINCOLN TODD BLANKENSHIP
DB 969 PG 143

164
ADAM J. ROLLINS
BRANDEE D. ROLLINS
DB 915 PG 386

164A
MARGARET WILLIS
DB 93E PG 190
DB 357 PG 228

166A
JAMES WESLEY SIMPSON
DB 848 PG 615

162
DEBORAH FRAN LAFONTAINE
DB 112 PG 224

161
EVELYN FRANCES MOORE HEFLIN
DB 07E PG 49
DB 355 PG 37

| | |
|-------------------------|---------------------|
| RW SHEET NO. | |
| ROADWAY DESIGN ENGINEER | HYDRAULICS ENGINEER |

**DOCUMENT NOT CONSIDERED FINAL
 UNLESS ALL SIGNATURES COMPLETED**



RUTHERFORD COUNTY BOARD OF EDUCATION
 DB 496 PG 385

171A
 RUTHERFORD COUNTY BOARD OF EDUCATION
 DB 496 PG 385

HARRISON FAMILY PROPERTIES, LLC
 DB 1090 PG 530
 PB 35 PG 9

STEVENS FAMILY FOUNDATION, INC
 DB 979 PG 99

OLD US 221

PROPOSED CUL-DE-SAC

170

171

173
 JEFFREY YATES ROTHROCK
 CARMEN MARIA ROTHROCK
 DB 1003 PG 41
 DB 489 PG 484

174
 HHG REAL PROPERTY, LLC
 DB 1085 PG 536
 DB 401 PG 553

DOROTHY M. PARRISH
 PATRICIA ANN PARRISH
 DB 1027 PG 545
 DB 150 PG 272

Laurie Ann McWhorter
 DB 1049 PG 452
 DB 870 PG 368
 PB 17 PG 31

Matthew R. Putnam
 Deanna S. Putnam
 DB 684 PG 99
 PB 17 PG 31

Billy Ray Crain
 Joanne L. Crain
 DB 707 PG 772
 PB 17 PG 31

Jerry Allen Searcy
 DB 727 PG 802
 PB 17 PG 31

166A

5/14/19

MATCH TO SHEET 16 - L3- STA. 925+00.00

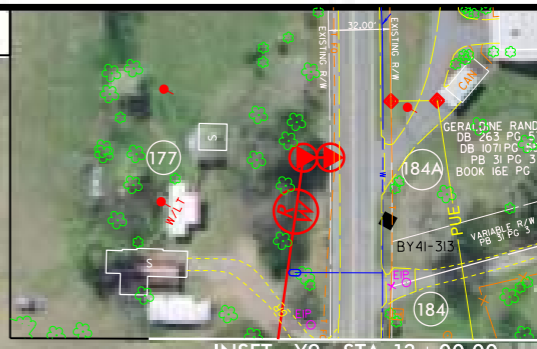
MATCH TO SHEET 18 - L3- STA. 938+00.00



5/14/19
MATCH TO SHEET 17 --L3-- STA. 938+00.00
MATCH TO SHEET 32 --Y11-- STA. 13+65.00

Dewberry
2610 WYCLIFF ROAD
SUITE 400
RALEIGH, NC 27605
PHONE: 919.881.9229
NC CON. No. F-09261

| | | | |
|--|---------------------|-----------|----|
| PROJECT REFERENCE NO. | R-2233BB | SHEET NO. | 18 |
| RW SHEET NO. | | 18 | |
| ROADWAY DESIGN ENGINEER | HYDRAULICS ENGINEER | | |
| DOCUMENT NOT CONSIDERED FINAL UNLESS ALL SIGNATURES COMPLETED | | | |



BEGIN TIP PROJECT R2233BB

RUTHERFORDTON BYPASS (US 221)

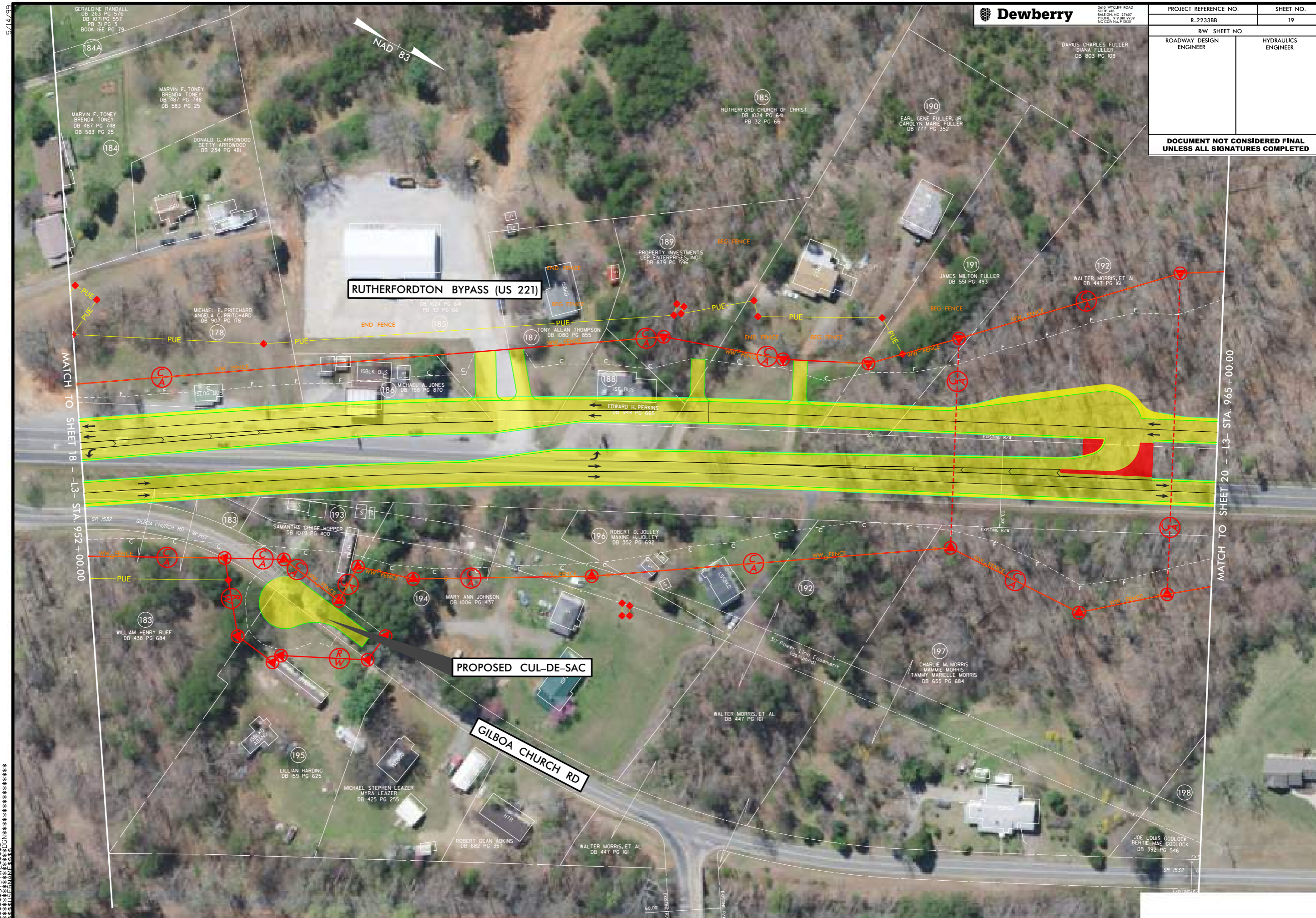
OLD US 221

THOMPSON RD

BOYHILL RD

MATCH TO SHEET 32 --Y11-- STA. 13+65.00

MATCH TO SHEET 19 --L3-- STA. 952+00.00



RUTHERFORDTON BYPASS (US 221)

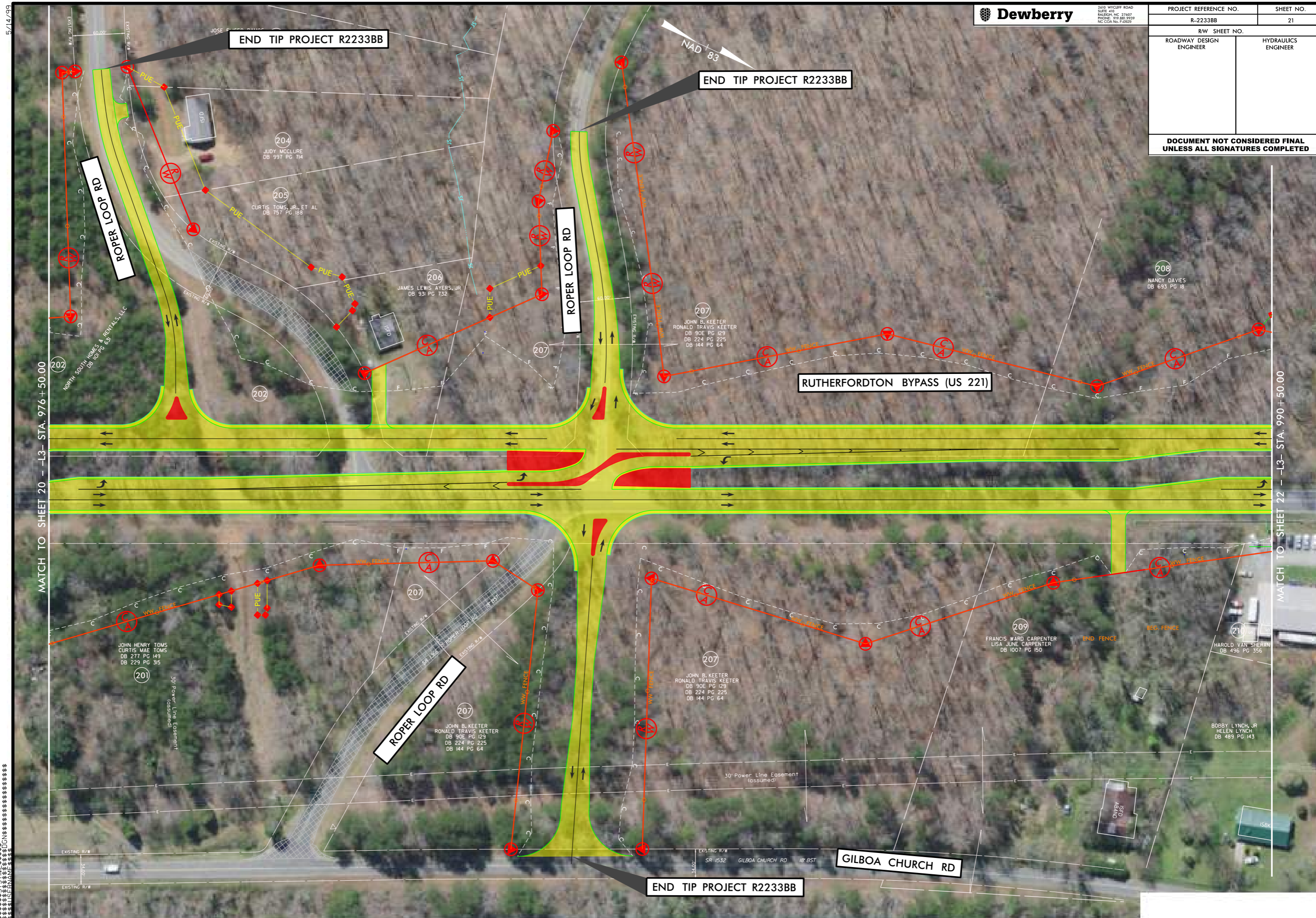
PROPOSED CUL-DE-SAC

GILBOA CHURCH RD

MATCH TO SHEET 18 - L3- STA. 952+00.00

MATCH TO SHEET 20 - L3- STA. 965+00.00

5/14/2019



MATCH TO SHEET 20 - L3- STA. 976+50.00

MATCH TO SHEET 22 - L3- STA. 990+50.00

NAD 83

END TIP PROJECT R2233BB

END TIP PROJECT R2233BB

ROPER LOOP RD

ROPER LOOP RD

RUTHERFORDTON BYPASS (US 221)

ROPER LOOP RD

GILBOA CHURCH RD

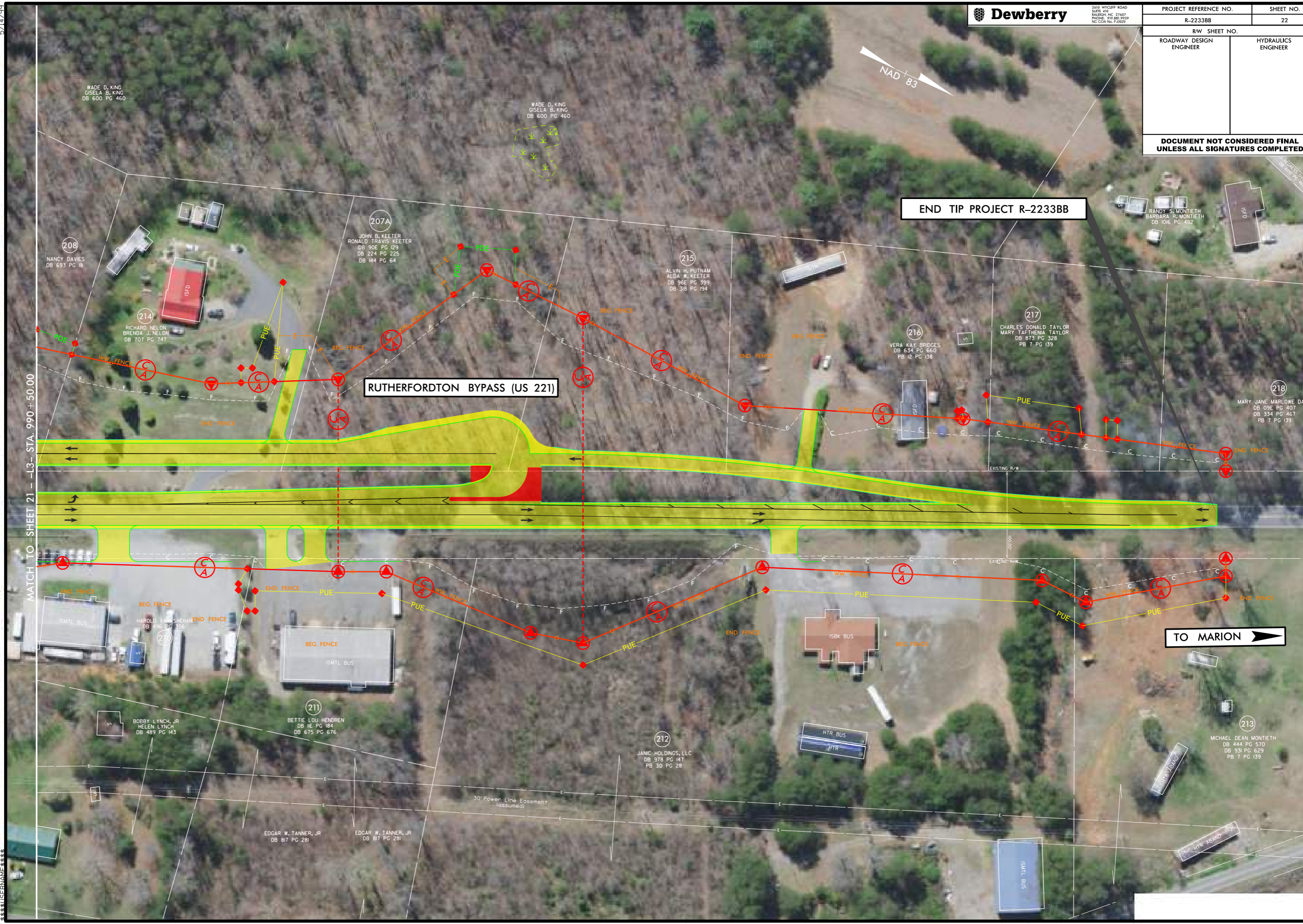
END TIP PROJECT R2233BB

1
2
3
4
5
6
7
8
9
10
11
12
13
14
15
16
17
18
19
20
21
22
23
24
25
26
27
28
29
30
31
32
33
34
35
36
37
38
39
40
41
42
43
44
45
46
47
48
49
50
51
52
53
54
55
56
57
58
59
60
61
62
63
64
65
66
67
68
69
70
71
72
73
74
75
76
77
78
79
80
81
82
83
84
85
86
87
88
89
90
91
92
93
94
95
96
97
98
99
100

| | |
|-------------------------|---------------------|
| RW SHEET NO. | |
| ROADWAY DESIGN ENGINEER | HYDRAULICS ENGINEER |

**DOCUMENT NOT CONSIDERED FINAL
 UNLESS ALL SIGNATURES COMPLETED**

5/14/2019



END TIP PROJECT R-2233BB

RUTHERFORDTON BYPASS (US 221)

TO MARION →

MATCH TO SHEET 21 - L3 - STA. 990 + 50.00

WADE D. KING
 GISELA B. KING
 DB 600 PG 460

WADE D. KING
 GISELA B. KING
 DB 600 PG 460

208
 NANCY DAVIES
 DB 693 PG 18

207A
 JOHN B. KEETER
 RONALD TRAVIS KEETER
 DB 90E PG 129
 DB 224 PG 225
 DB 144 PG 64

215
 ALVIN H. PUTNAM
 ALDA W. KEETER
 DB 96E PG 399
 DB 318 PG 194

214
 RICHARD NELSON
 BRENDA J. NELSON
 DB 707 PG 747

216
 VERA KAY BRIDGES
 DB 634 PG 660
 PB 12 PG 138

217
 CHARLES DONALD TAYLOR
 MARY TARTHEMIA TAYLOR
 DB 873 PG 328
 PB 7 PG 139

218
 MARY JANE MARLOWE DAVIS
 DB 09E PG 407
 DB 334 PG 467
 PB 7 PG 139

210
 HAROLD VAN SHEHAN
 DB 496 PG 356

211
 BETTIE LOU HENDREN
 DB 1E PG 184
 DB 675 PG 676

212
 JANC HOLDINGS, LLC
 DB 978 PG 147
 PB 30 PG 28

213
 MICHAEL DEAN MONTIEITH
 DB 444 PG 570
 DB 931 PG 629
 PB 7 PG 139

BOBBY LYNCH, JR.
 HELEN LYNCH
 DB 489 PG 143

EDGAR W. TANNER, JR.
 DB 817 PG 281

EDGAR W. TANNER, JR.
 DB 817 PG 281

30' Power Line Easement
 (assumed)

5/14/19

| | | | |
|-------------------------|--|---------------------|--|
| PROJECT REFERENCE NO. | | SHEET NO. | |
| R-2233BB | | 23 | |
| RW SHEET NO. | | | |
| ROADWAY DESIGN ENGINEER | | HYDRAULICS ENGINEER | |

**DOCUMENT NOT CONSIDERED FINAL
UNLESS ALL SIGNATURES COMPLETED**



5/14/19

| | | | |
|---|---------------------|-----------|--|
| PROJECT REFERENCE NO. | | SHEET NO. | |
| R-2233BB | | 24 | |
| RW SHEET NO. | | | |
| ROADWAY DESIGN ENGINEER | HYDRAULICS ENGINEER | | |
| PRELIMINARY PLANS DO NOT USE FOR CONSTRUCTION | | | |
| DOCUMENT NOT CONSIDERED FINAL UNLESS ALL SIGNATURES COMPLETED | | | |

46
 RUTHERFORD COUNTY BOARD OF EDUCATION
 DB 384 PG 834
 DB 509 PG 337

WOODWAY RUTHERFORD, LLC
 DB 898 PG 484
 PB 26 PG 32, 33

RARB PROPERTIES, LLC
 DB 827 PG 771
 DB 846 PG 696

GPM SOUTHEAST, LLC
 DB 1099 PG 724

ISBLKBUS RITE AID

BETSY-FRANCES PROPERTIES, LLC
 DB 898 PG 54

END TIP PROJECT R-2233BB

MATCH TO SHEET 6 - Y2- STA. 37 + 50.00

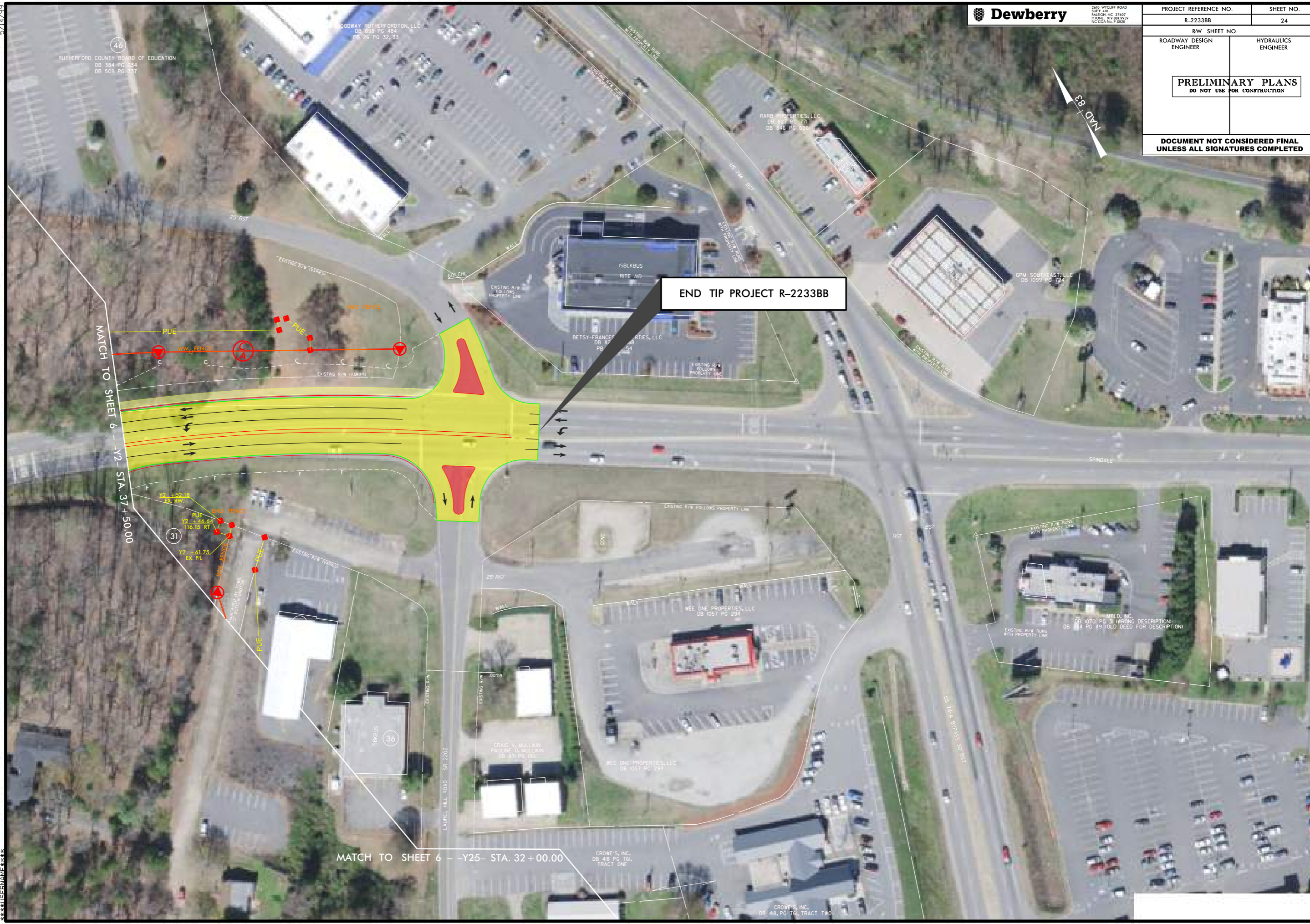
Y2 + 52.18 EX. RW
 PUE
 Y2 + 46.64
 116.15 RT
 Y2 + 61.75 EX. PL

MATCH TO SHEET 6 - Y2- STA. 32 + 00.00

CROWE'S, INC.
 DB 418 PG 761, TRACT ONE

CROWE'S, INC.
 DB 418, PG 761, TRACT TWO

CONSTRUCTION



5/14/2019
CON
11
12
13
14
15
16
17
18
19
20
21
22
23
24
25
26
27
28
29
30
31
32
33
34
35
36
37
38
39
40
41
42
43
44
45
46
47
48
49
50
51
52
53
54
55
56
57
58
59
60
61
62
63
64
65
66
67
68
69
70
71
72
73
74
75
76
77
78
79
80
81
82
83
84
85
86
87
88
89
90
91
92
93
94
95
96
97
98
99
100

| | | | |
|--|--|---------------------|--|
| PROJECT REFERENCE NO. | | SHEET NO. | |
| R-2233BB | | 25 | |
| RW SHEET NO. | | | |
| ROADWAY DESIGN ENGINEER | | HYDRAULICS ENGINEER | |
| DOCUMENT NOT CONSIDERED FINAL UNLESS ALL SIGNATURES COMPLETED | | | |

END TIP PROJECT R-2233BB

SECOND BAPTIST CHURCH

GREEN STREET

CLEGHORN ST.

ELM ST.

CEDAR ST.

MATCH TO SHEET 9 -- Y19-- STA. 17+00.00



5/14/99



2610 WYCLIFF ROAD
SUITE 410
RALEIGH, NC 27607
PHONE: 773.83.9329
NC CCA No. F-2929

| | | | |
|--|--|---------------------|--|
| PROJECT REFERENCE NO. | | SHEET NO. | |
| R-2233BB | | 26 | |
| RW SHEET NO. | | | |
| ROADWAY DESIGN ENGINEER | | HYDRAULICS ENGINEER | |
| DOCUMENT NOT CONSIDERED FINAL UNLESS ALL SIGNATURES COMPLETED | | | |



5/14/19
 11
 10
 9
 8
 7
 6
 5
 4
 3
 2
 1
 1
 2
 3
 4
 5
 6
 7
 8
 9
 10
 11



2610 WYCLIFF ROAD
 SUITE 410
 RALEIGH, NC 27607
 PHONE: 773.83.9329
 NC CCA No. F-2929

| | |
|--|---------------------|
| PROJECT REFERENCE NO. | SHEET NO. |
| R-2233BB | 27 |
| RW SHEET NO. | |
| ROADWAY DESIGN ENGINEER | HYDRAULICS ENGINEER |
| | |
| DOCUMENT NOT CONSIDERED FINAL UNLESS ALL SIGNATURES COMPLETED | |



BEGIN TIP PROJECT R2233BB

E. MOUNTAIN ST. (US 64)

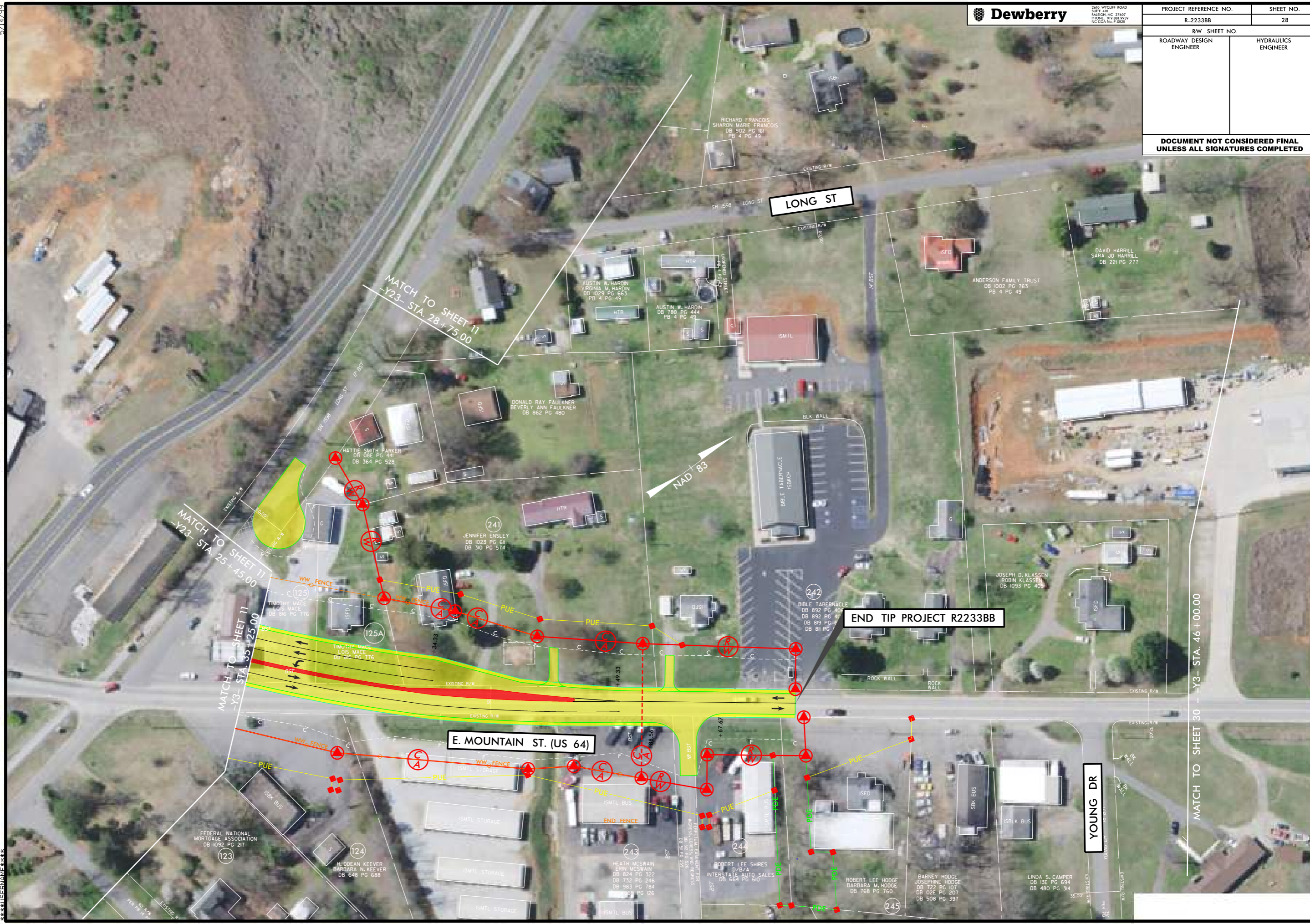
MATCH TO SHEET 11
 DR3- STA. 14 + 50.00

MATCH TO SHEET 11 -Y3- STA. 19 + 50.00

NAD 83

5/14/99

| | | |
|--|---------------------|-----------|
| PROJECT REFERENCE NO. | | SHEET NO. |
| R-2233BB | | 28 |
| RW SHEET NO. | | |
| ROADWAY DESIGN ENGINEER | HYDRAULICS ENGINEER | |
| DOCUMENT NOT CONSIDERED FINAL UNLESS ALL SIGNATURES COMPLETED | | |



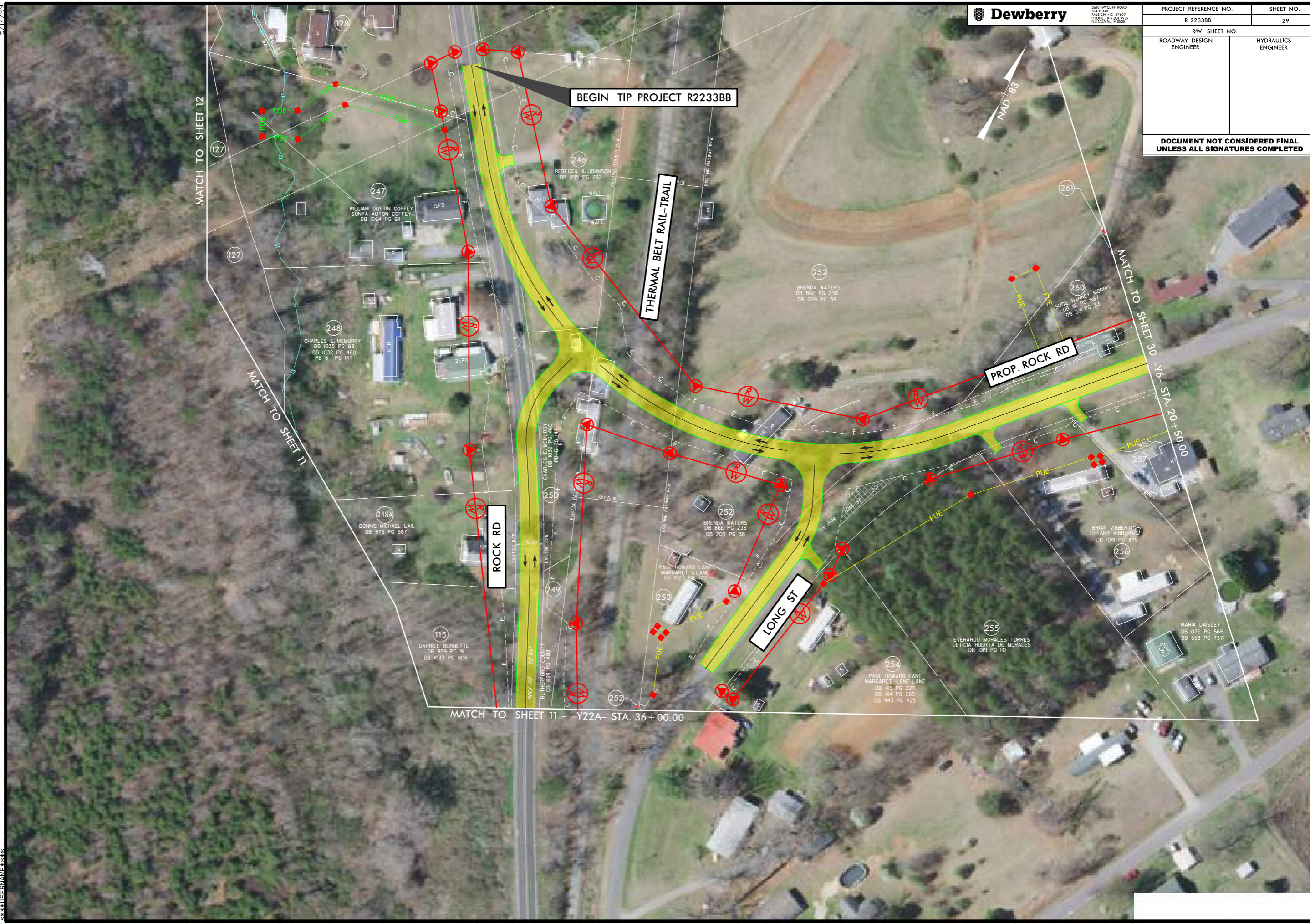
5/14/99

5/14/2019



2610 WYCLIFF ROAD
SUITE 410
RALEIGH, NC 27607
PHONE: 773.883.9329
NC CCA No. F-2929

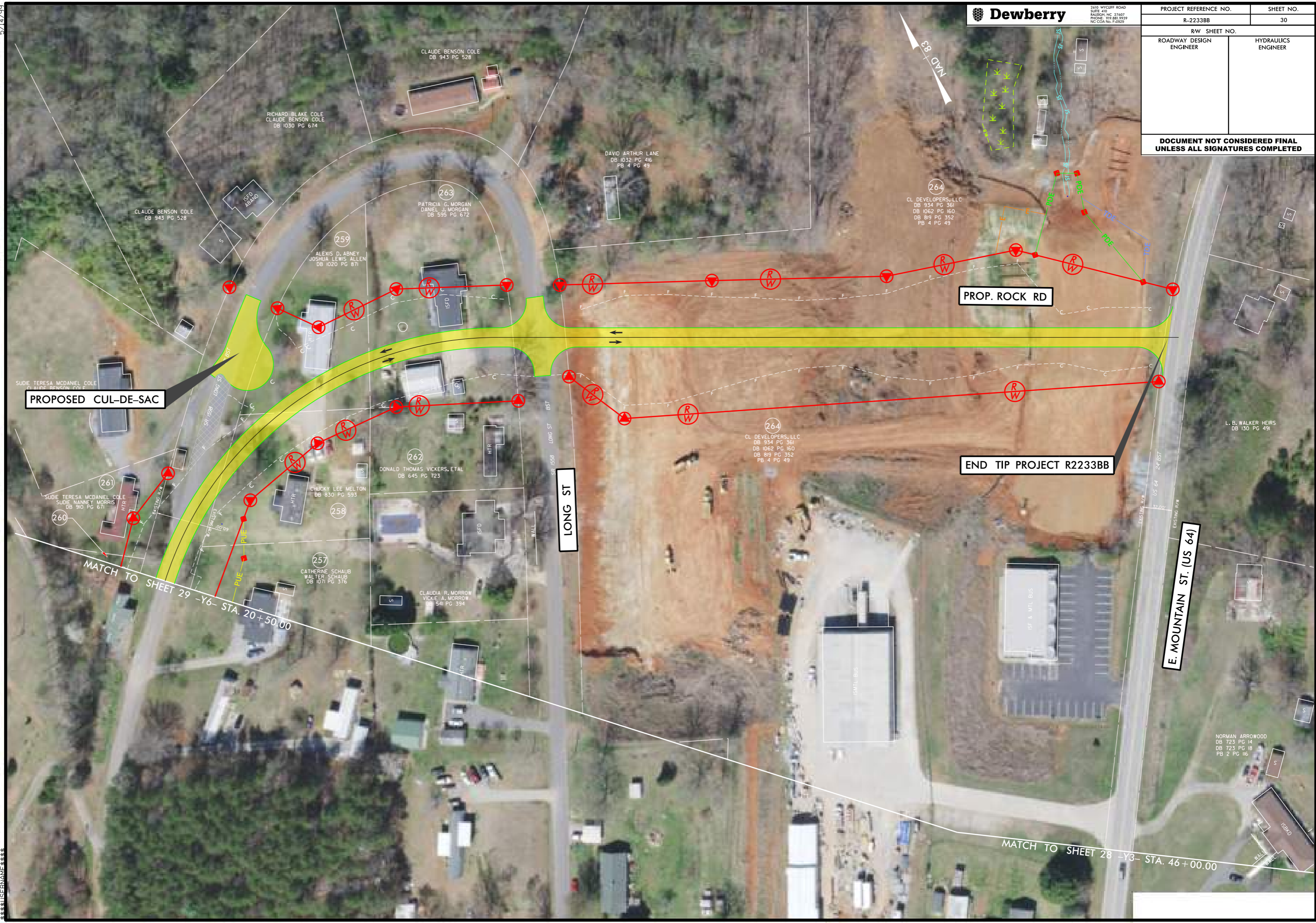
| | | | |
|--|--|---------------------|--|
| PROJECT REFERENCE NO. | | SHEET NO. | |
| R-2233BB | | 29 | |
| RW SHEET NO. | | | |
| ROADWAY DESIGN ENGINEER | | HYDRAULICS ENGINEER | |
| | | | |
| DOCUMENT NOT CONSIDERED FINAL UNLESS ALL SIGNATURES COMPLETED | | | |



5/14/2019

5/14/19

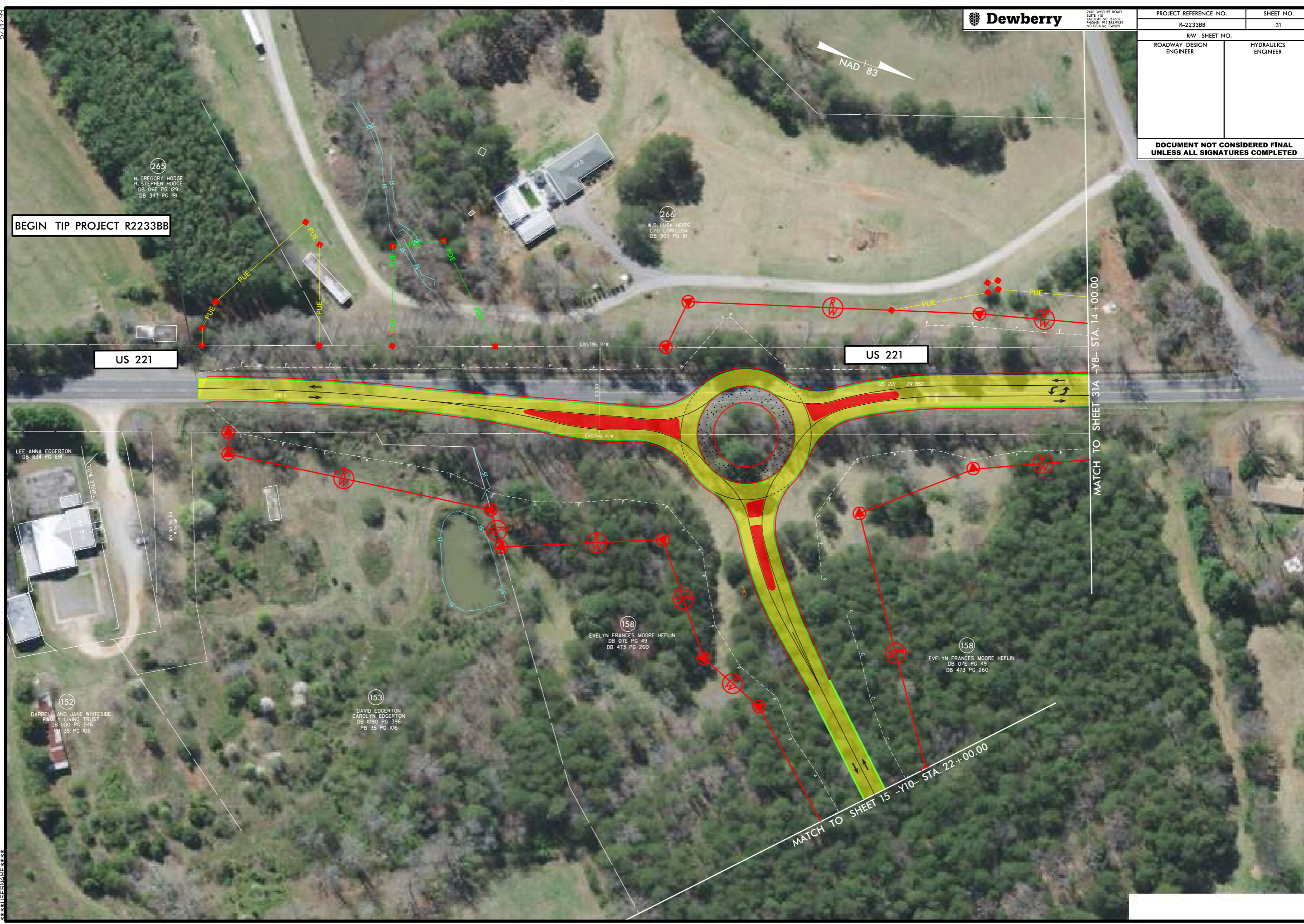
| | | | |
|--|--|---------------------|--|
| PROJECT REFERENCE NO. | | SHEET NO. | |
| R-2233BB | | 30 | |
| RW SHEET NO. | | | |
| ROADWAY DESIGN ENGINEER | | HYDRAULICS ENGINEER | |
| DOCUMENT NOT CONSIDERED FINAL UNLESS ALL SIGNATURES COMPLETED | | | |



5/14/19

5/14/99
15
14
13
12
11
10
9
8
7
6
5
4
3
2
1

| | | | |
|--|--|---------------------|--|
| PROJECT REFERENCE NO. R-2233BB | | SHEET NO. 31 | |
| RW SHEET NO. | | | |
| ROADWAY DESIGN ENGINEER | | HYDRAULICS ENGINEER | |
| DOCUMENT NOT CONSIDERED FINAL UNLESS ALL SIGNATURES COMPLETED | | | |



| | | | |
|--|--|---------------------|--|
| PROJECT REFERENCE NO. | | SHEET NO. | |
| R-2233BB | | 31A | |
| RW SHEET NO. | | | |
| ROADWAY DESIGN ENGINEER | | HYDRAULICS ENGINEER | |
| DOCUMENT NOT CONSIDERED FINAL UNLESS ALL SIGNATURES COMPLETED | | | |

5/14/19



END TIP PROJECT R2233BB

MATCH TO SHEET 31 - Y8 - STA. 14+00.00

MATCH TO SHEET 11 - Y11 - STA. 14+00.00

CUT LINE TO SHEET 16

5/14/99



2430 WYCLIFF ROAD
SUITE 410
RALEIGH, NC 27607
PHONE: 773.83.9329
NC COA No. F-2929

| | | | |
|--|--|---------------------|--|
| PROJECT REFERENCE NO. R-2233BB | | SHEET NO. 32 | |
| RW SHEET NO. | | | |
| ROADWAY DESIGN ENGINEER | | HYDRAULICS ENGINEER | |
| DOCUMENT NOT CONSIDERED FINAL UNLESS ALL SIGNATURES COMPLETED | | | |



MATCH TO SHEET 18 - Y11 - STA. 13+65.00

BROYHILL RD

END TIP PROJECT R2233BB

1
2
3
4
5
6
7
8
9
10
11
12
13
14
15
16
17
18
19
20
21
22
23
24
25
26
27
28
29
30
31
32
33
34
35
36
37
38
39
40
41
42
43
44
45
46
47
48
49
50
51
52
53
54
55
56
57
58
59
60
61
62
63
64
65
66
67
68
69
70
71
72
73
74
75
76
77
78
79
80
81
82
83
84
85
86
87
88
89
90
91
92
93
94
95
96
97
98
99
00